

# State of Wyoming Corner Record

(In compliance with the **CORNER PERPETUATION AND FILING ACT**, Wyoming Statutes, 1997 Section 33-29-140 et. seq, and the Rules and Regulations of the Board of Professional Engineers and Professional Land Surveyors)

Reverse side of this form may be used if more space is needed.

Record of original survey and citation of source of historical information (if corner is lost or obliterated). Description of corner monumentation evidence found and/or monument and accessories established to perpetuate the location of this corner. Sketch of relative location of monument, accessories, and reference points with course and distance to adjacent corner(s) (if determined in this survey). Method and rationale for reestablishment of lost or obliterated corner.

**G.L.O. RECORD:**

**VARIATION 15°45'E**  
**FROM THE CORNER TO SECTIONS 28,**  
**29, 32 AND 33 RAN NORTH BETWEEN**  
**SECTIONS 28 AND 29, 80 CHAINS AND**  
**SET A LIMESTONE 18"X12"X4", 10"**  
**DEEP MARKED WITH 2 NOTCHES ON**  
**THE SOUTH SIDE AND 4 NOTCHES ON**  
**THE EAST SIDE FOR THE CORNER TO**  
**SECTIONS TO 20, 21, 28 AND 29.**

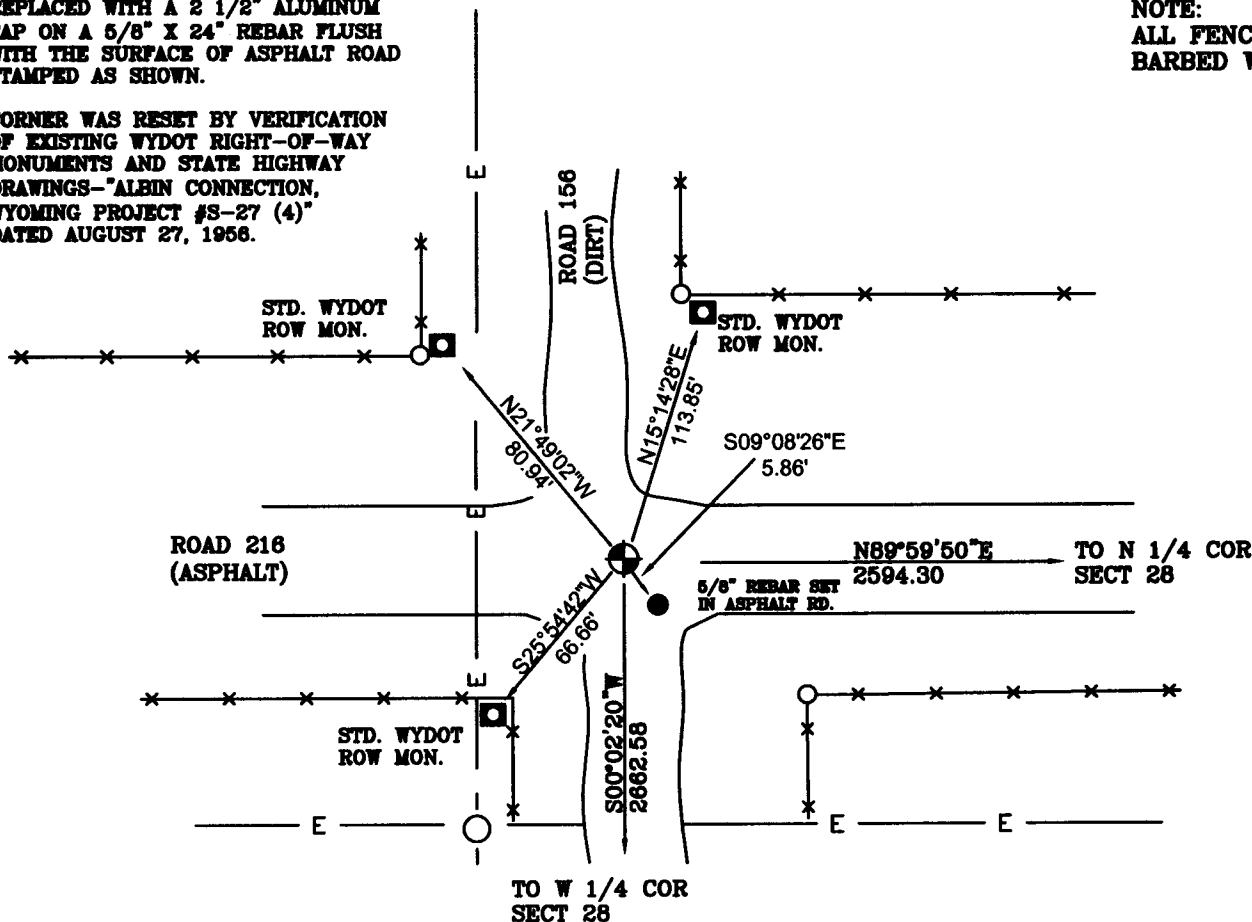


**AT THE CORNER:**

**FOUND A 1" Ø EYE BOLT 4"**  
**BELOW SURFACE OF ASPHALT ROAD**  
**REPLACED WITH A 2 1/2" ALUMINUM**  
**CAP ON A 5/8" X 24" REBAR FLUSH**  
**WITH THE SURFACE OF ASPHALT ROAD**  
**STAMPED AS SHOWN.**

**NOTE:**  
**ALL FENCES ARE**  
**BARBED WIRE**

**CORNER WAS RESET BY VERIFICATION**  
**OF EXISTING WYDOT RIGHT-OF-WAY**  
**MONUMENTS AND STATE HIGHWAY**  
**DRAWINGS-"ALBIN CONNECTION,**  
**WYOMING PROJECT #S-27 (4)"**  
**DATED AUGUST 27, 1956.**



Date of Field Work: 11/18/08

Office Reference: RABQU

**Cross Index Plat**

Firm/Agency, Address

This corner record was prepared by me or under my direction and supervision.

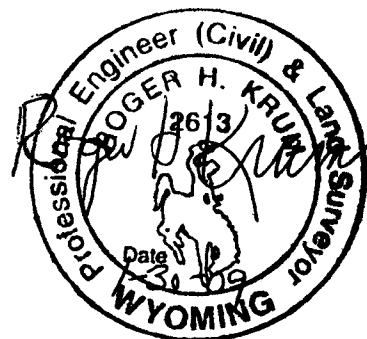
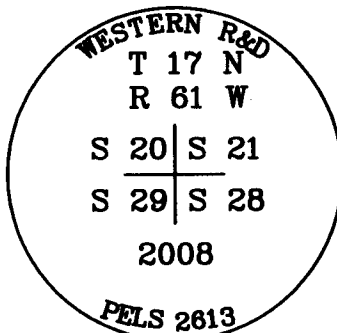
1	2	3	4	5	6	7	8	9	10	11	12	13	14	15	16	17	18	19	20	21	22	23	24	25	
A	+	+	+	+	+	+	+	+	+	+	+	+	+	+	+	+	+	+	+	+	+	+	+	+	
B	+	6	+	5	+	4	+	3	+	2	+	1	+	+	+	+	+	+	+	+	+	+	+	+	
C	+	+	+	+	+	+	+	+	+	+	+	+	+	+	+	+	+	+	+	+	+	+	+	+	
D	+	+	+	+	+	+	+	+	+	+	+	+	+	+	+	+	+	+	+	+	+	+	+	+	
E	+	+	+	+	+	+	+	+	+	+	+	+	+	+	+	+	+	+	+	+	+	+	+	+	
F	+	+	+	+	+	+	+	+	+	+	+	+	+	+	+	+	+	+	+	+	+	+	+	+	
G	+	7	+	8	+	9	+	10	+	11	+	12	+	+	+	+	+	+	+	+	+	+	+	+	
H	+	+	+	+	+	+	+	+	+	+	+	+	+	+	+	+	+	+	+	+	+	+	+	+	
I	+	+	+	+	+	+	+	+	+	+	+	+	+	+	+	+	+	+	+	+	+	+	+	+	
J	+	+	+	+	+	+	+	+	+	+	+	+	+	+	+	+	+	+	+	+	+	+	+	+	
K	+	+	+	+	+	+	+	+	+	+	+	+	+	+	+	+	+	+	+	+	+	+	+	+	
L	+	18	+	17	+	16	+	15	+	14	+	13	+	+	+	+	+	+	+	+	+	+	+	+	
M	+	+	+	+	+	+	+	+	+	+	+	+	+	+	+	+	+	+	+	+	+	+	+	+	
N	+	+	+	+	+	+	+	+	+	+	+	+	+	+	+	+	+	+	+	+	+	+	+	+	
O	+	+	+	+	+	+	+	+	+	+	+	+	+	+	+	+	+	+	+	+	+	+	+	+	
P	+	19	+	20	+	21	+	22	+	23	+	24	+	+	+	+	+	+	+	+	+	+	+	+	
Q	+	+	+	+	+	+	+	+	+	+	+	+	+	+	+	+	+	+	+	+	+	+	+	+	
R	+	+	+	+	+	+	+	+	+	+	+	+	+	+	+	+	+	+	+	+	+	+	+	+	
S	+	+	+	+	+	+	+	+	+	+	+	+	+	+	+	+	+	+	+	+	+	+	+	+	
T	+	30	+	29	+	28	+	27	+	26	+	25	+	+	+	+	+	+	+	+	+	+	+	+	
U	+	+	+	+	+	+	+	+	+	+	+	+	+	+	+	+	+	+	+	+	+	+	+	+	
V	+	+	+	+	+	+	+	+	+	+	+	+	+	+	+	+	+	+	+	+	+	+	+	+	
W	+	+	+	+	+	+	+	+	+	+	+	+	+	+	+	+	+	+	+	+	+	+	+	+	
X	+	31	+	32	+	33	+	34	+	35	+	36	+	+	+	+	+	+	+	+	+	+	+	+	
Y	+	+	+	+	+	+	+	+	+	+	+	+	+	+	+	+	+	+	+	+	+	+	+	+	
Z	1	2	3	4	5	6	7	8	9	10	11	12	13	14	15	16	17	18	19	20	21	22	23	24	25

Western R&D, Ltd.  
 5809 Yellowstone Rd, Suite B  
 Cheyenne, Wyoming 82009

SEAL & SIGNATURE

Telephone Number: (307) 632-5656

● Denotes Monument Set



Corner Name NORTHEAST CORNER Section 28, T 17 N, R 61 W, 6th P.M.

Cross-Index No.: R-9

County: LARAMIE Wyoming

SBRPEPLS/PLSW: March 1994; PLSW January 1998